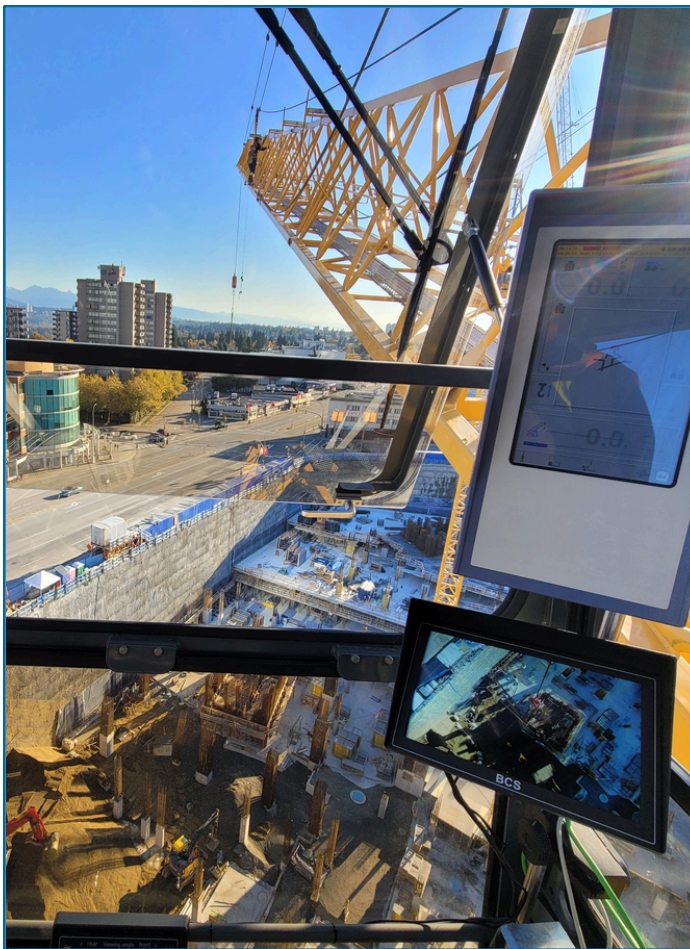


BCS CRANECAMERA

Installation guide for BCS Cranecamera systems:

VH-2250



More Information:

✉ info@cranecamera.eu

🌐 www.cranecamera.eu

Office: ☎ +31 33 466 8938

Service: 📞 +31 6 159 561 05

BCS
CRANECAMERA

Set description:

Introducing the VH-2250 crancamera set.

Designed specifically for luffing jib tower cranes, this advanced system ensures optimal visibility and precision. Encased in a nitrogen-filled housing, the camera features a motorised tilt function, maintaining a steady focus on the hook even as the crane adjusts its angle.

Operators can manually control the camera's tilt movements forward and backward from the cabin using a foot pedal, providing tailored visibility as needed. Image and data transmission are streamlined through a single cable connecting the monitor to the camera positioned at the top of the crane.

Enjoy the benefits of wind-resistant design, strategic mounting options that reduce potential damage, and adjustable viewing angles to guarantee the best possible view. The direct cable connection between the monitor and camera enhances reliability and performance.

The VH-2250 crancamera set includes a high-quality zoom camera, a cable for direct connection from the camera to the monitor, a wireless zoom pedal, and a 16:9 HD monitor available in either 10" or 13" sizes.

Engineered for durability, the system offers shock and vibration resistance, lens heating, and high-resolution imaging to withstand demanding work environments while delivering exceptional performance.



Cable reel (75 mtr)



Wireless zoom pedal



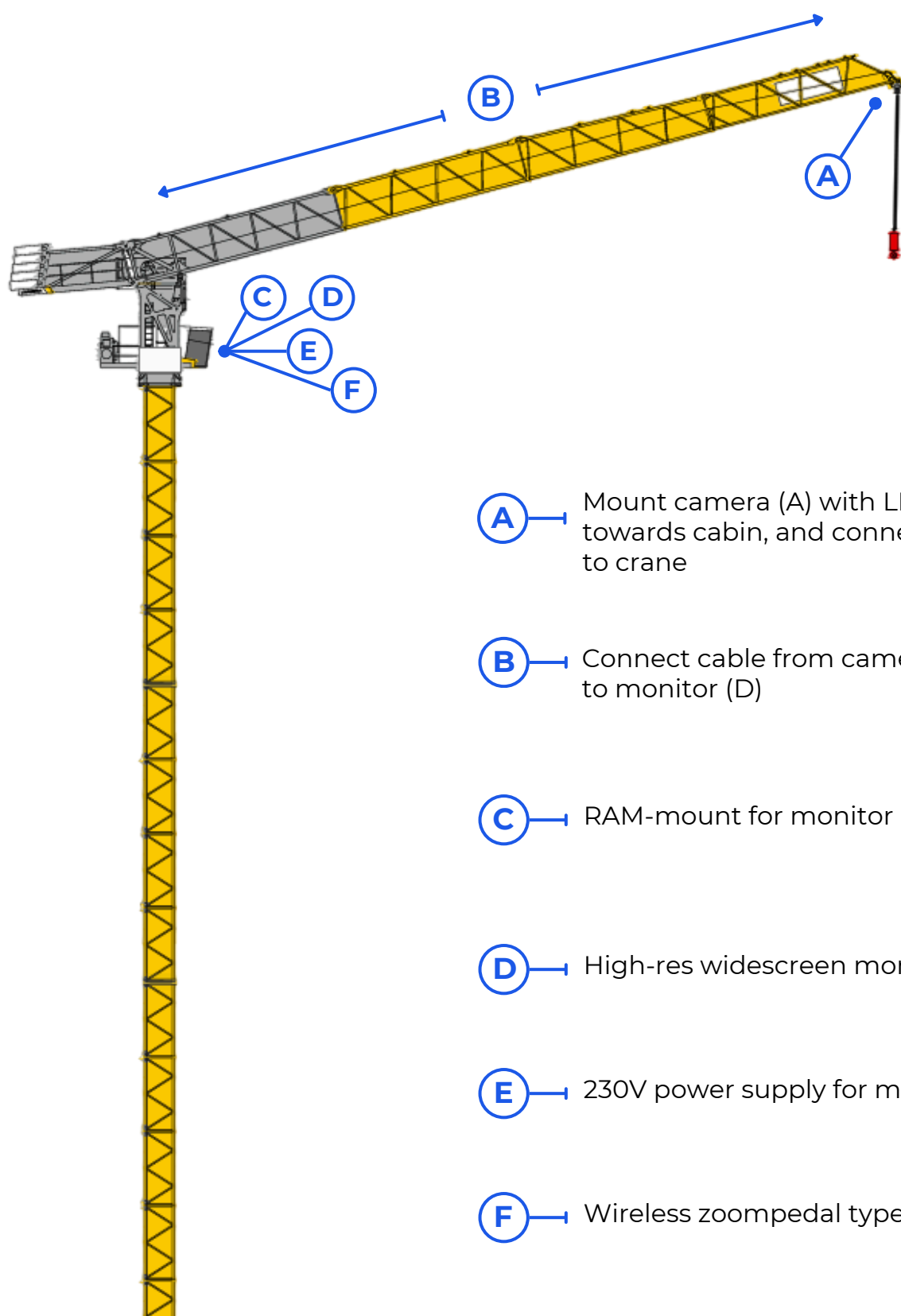


Component guide:

- **A:** Camera with auto-focus zoom & motorized tilt function
 - **A1:** Camera bracket
 - **A2:** Safety cord
- **B:** 75 mtr cable on reel
- **C:** Ram-mount for monitor
- **D:** High-res widescreen monitor type LC (10" or 13")
- **E:** Power supply for LC monitor (24V)
- **F:** Wireless zoom pedal type LC



Component placement schematic:



(A) — Mount camera (A) with LED facing towards cabin, and connect safety cord to crane

(B) — Connect cable from camera (A) to monitor (D)

(C) — RAM-mount for monitor

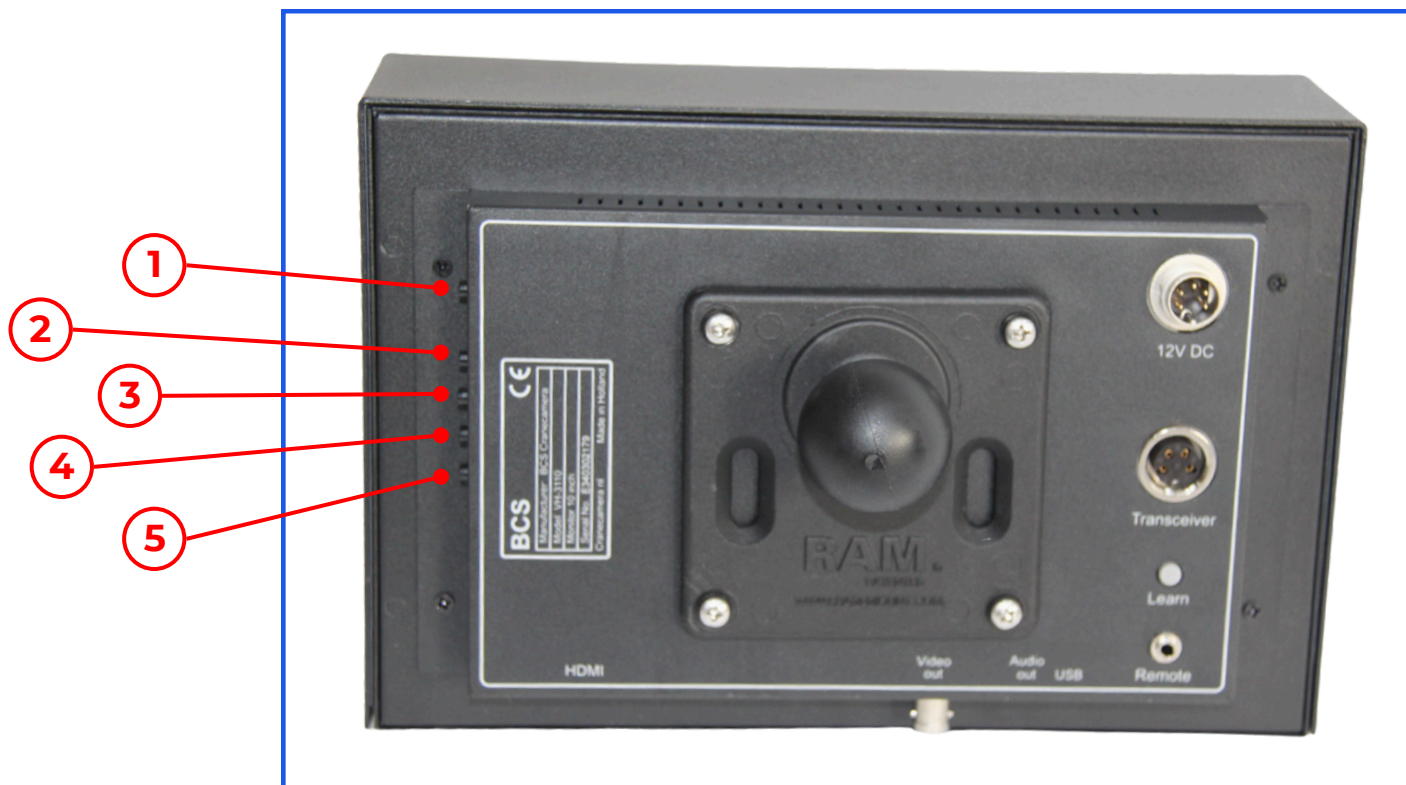
(D) — High-res widescreen monitor (10" or 13")

(E) — 230V power supply for monitor

(F) — Wireless zoom pedal type LC



Side-buttons user manual for the high-res widescreen monitor:



Button guide:

- **1:** Open the menu
- **2:** Navigate "Up"
- **3:** Navigate "Down"
- **4:** Navigate "Left"
- **5:** Navigate "Right"



CONTROL DEVICE CRANECAMERASYSTEM VH-2250



Viewing angle adjust:

Press "rear" to change the viewing angle to the front
Press "front" to change the viewing angle to the back

Zoom function:

Press "Zoom wide" to zoom out
Press "Zoom tele" to zoom in

Switching the camera on:

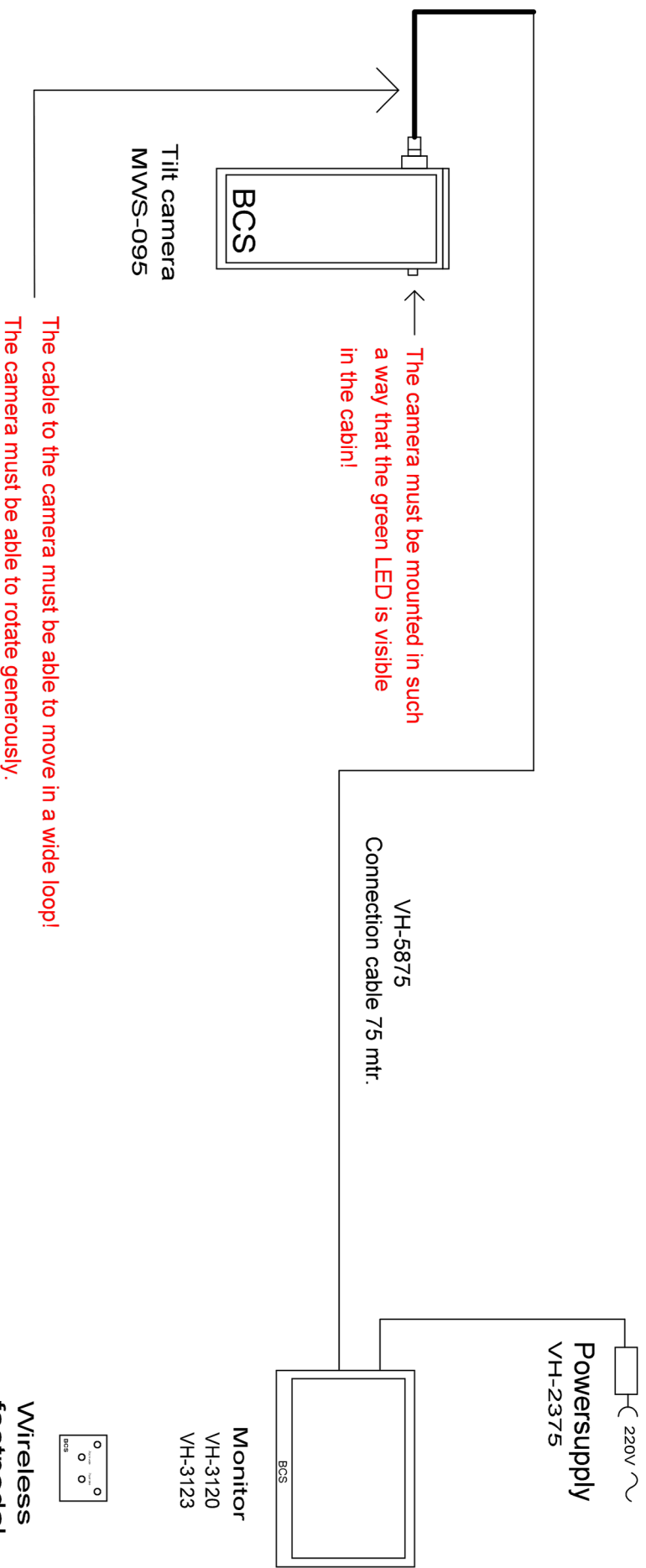
Press and hold "Zoom tele" to switch the camera and monitor on

Switching the camera off:

Press and hold "Zoom wide" for 10 seconds to switch the camera and monitor off



Before operating the VH-2250 camera system:
1. Connect both ends of video/data cable (VH-5875) to camera and monitor.
2. Connect powersupply to 24V input on monitor.



Mounting diagram
Wired tilt camerasytem
VH-2250

BCS Cranecamera BV
Kosmonaut 7
3824MK Amerfoort(NL)